



March 30, 2012

Vedere Connects: The Ultimate Bachelor Pad Comes with a Slide

Recently, professional Poker player Phil Galfond put his lavish downtown Manhattan apartment on the market. What was originally purchased as two apartments, has become a penthouse duplex that's the epitome of the ultimate bachelor pad. Designed by Turett Collaborative Architects, combined the two apartments with a helical slide that begins at the top floor and lands into the living room.



"This penthouse duplex [also has a] keyed elevator onto both floors, offering the perfect layout for entertaining both large groups and in more intimate settings, such as dinner parties," says real estate agents Lindsee Silverstein and Elizabeth Kee of CORE Group Marketing, representing the property.



The main level of the penthouse duplex reveals an open kitchen with breakfast bar, a spacious sitting room and formal dining room with a large terrace for cocktails or dining al fresco. Additionally, there is a large formal living room with two full baths and a second, south facing terrace with spectacular city and bridge views. Take the elevator to the top level to find a recreation room with a pool table and wet bar.



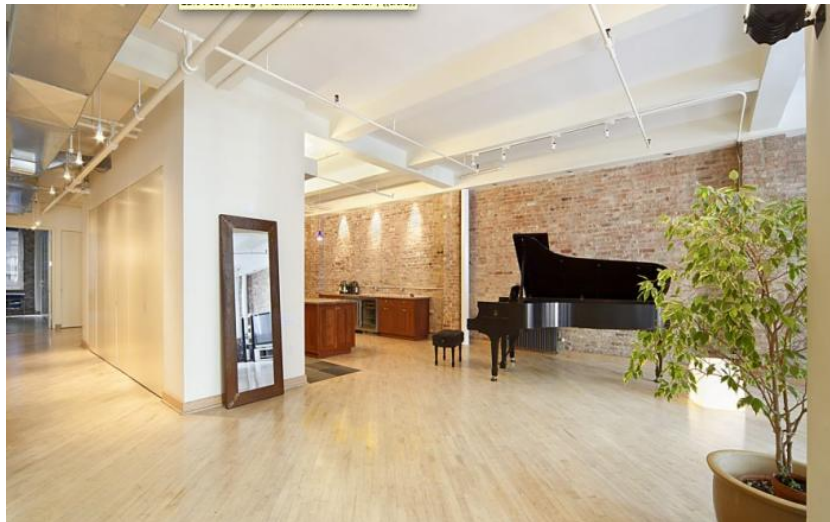
“A penthouse duplex to the bottom, surrounded by an eighteen foot glass atrium and city views is extremely rare to come by,” says Silverstein. To Silverstein and Kee, the ideal buyer seeks a rare find in a downtown New York City neighborhood that boasts large square footage and ample outdoor space. “Our target buyer appreciates the luxury of loft-style living in a full service building that also has unparalleled amenities, including a rooftop pool with cabanas, wet bar area with a grass lawn and an expansive 360 degree view of New York City.



“This property is, by far the most unique property I have represented, says Kee. “I have yet to see another apartment in New York City that offers a sculptural slide as an art installation with the dual function of an artistic expression and an alternate way to descend to the main level.”



If you think that this might be the only extravagant property that the agents have ever represented, think again. “[Another] recent properties I represented [was located at] The Stanwick, (132 West 22nd Street) in Manhattan, which was a 3000sqft+ 2 bedrooms/2 Bath loft with soaring ceilings and famed composer Andrew Lloyd Webber's grand concert piano.



But when it comes to selling this property, Silverstein believes that the downtown penthouse duplex will definitely be one of her most memorable sales. “As soon as any buyer walks into the space it seems they connect with the property immediately,” she says. “The buyer's eyes light up--their reaction is [always] priceless,” she adds. For Silverstein, it's the sculptural slide that has become the incredible conversation piece that welcomes playfulness. “No matter who walks off the elevator, everyone lets loose and has fun exploring all of the features this East Village pad,” she states.



According to the agents, potential purchasers mentioned wanting to landscape the 1000+sqft private roof deck in order to create a private BBQ and outdoor dining & wet bar area, while others have described building a private Jacuzzi or Japanese soaking tub as a means to better enjoy the panoramic views of the skyline and sunsets.