



February 24, 2012 – Sara Polsky

Pro Poker Player's Penthouse With Slide Asks \$3.99 Million



If there's any building where a professional poker player could build a **steel slide** to connect two floors, it's the East Village's hard-partying A Building. And indeed, that's where **Phil Galfond** had Turrett Collaborative Architects create a helical slide to combine two penthouse condos. (They also added a game room and a terrace putting green, as you do.) Now it's time to pass the fun along to the next generation (and, in Galfond's case, move to Canada in the wake of the Justice Department's online poker crackdown). The *Journal* reports that Galfond has put the apartment on the market for **\$3.99 million**. (He paid \$3.2 million for the uncombined 2BR penthouses in 2008.)

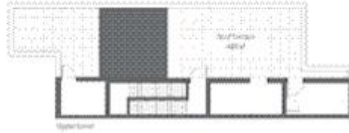
[A little more about that slide](#)

Here's how the architects describe Galfond's slide:

The half-tube stainless steel slide starts on the top floor near the office, and lands below near both the living and dining areas. The sculptural slide is housed in a newly created 18' tall double-height space, which includes custom designed glass railings. The image of the stainless steel curves in front of the oversized window to the city beyond, to say nothing of the **irrepressible glee of grown adults on the slide**, is surprisingly poetic; with careful detailing, the playground element is an unexpectedly elegant addition to the space.

For visitors less filled with irrepressible glee at the thought of an indoor slide, the listing notes that there's also a staircase "as an alternative way down to the first floor."

There's no floorplan up yet, but here are the floorplans for penthouses F and G, pre-combo:



#PHG

#PHF

