



March 9, 2016

Nolita's Ritzy Church-to-Condo Conversion Reveals Interiors, Pricing

The former St. Patrick's Old Cathedral School is on its way to becoming a fancy condo complex



A little more than a year after the first renderings appeared for the condo conversion at St. Patrick's Old Cathedral School, a full website for the development has launched, revealing both pricing for the project, as well as a plethora of new renderings. Those images show off the interiors of the project's seven condos, as well as those for the \$25 million townhouse that will sit at the complex's northeast corner. And even more tantalizing for real-estate gawkers: The website has full floorplans for the complex's seven condos, as well as that schmancy townhouse. As previously reported, no two apartments have the same floorplan; but each unit is quite large (the smallest, 3B, measures 2,616 square feet) and comes with a number of amenities, including en-suite bathrooms and plenty of storage space. Most are duplex or triplex units, and nearly all come with private outdoor space.

As for the prices, the cheapest ("cheap" being a relative term here) apartment—a 2,734-square-foot corner duplex with three fireplaces—is asking \$7.74 million, and the most expensive is a duplex penthouse, which has three terraces and is asking \$13.1 million. The townhouse, which is a whole other thing in terms of amenities, is asking \$25 million. So not inexpensive by any means, but we already knew that. Sales are expected to launch later this month.

Take a look at renderings for the condos below:



2 of 11



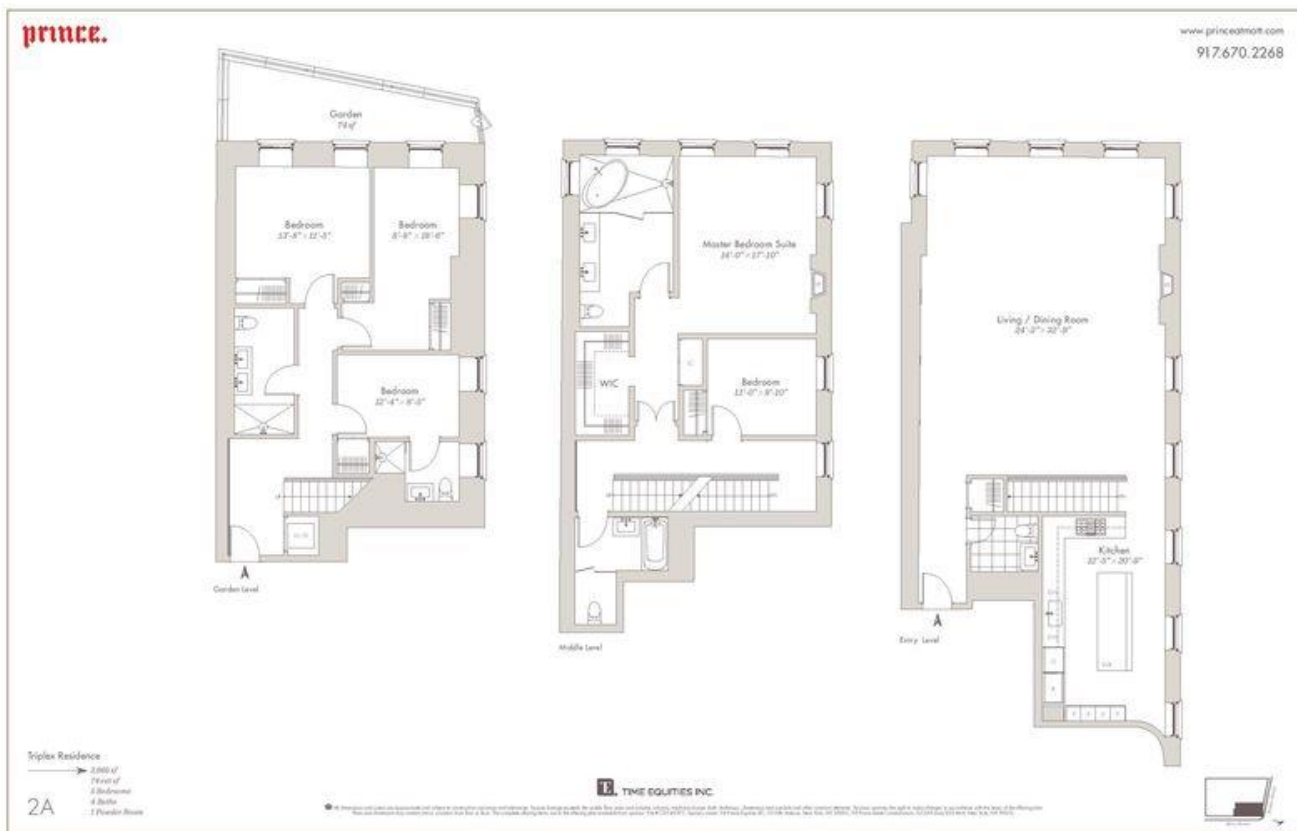
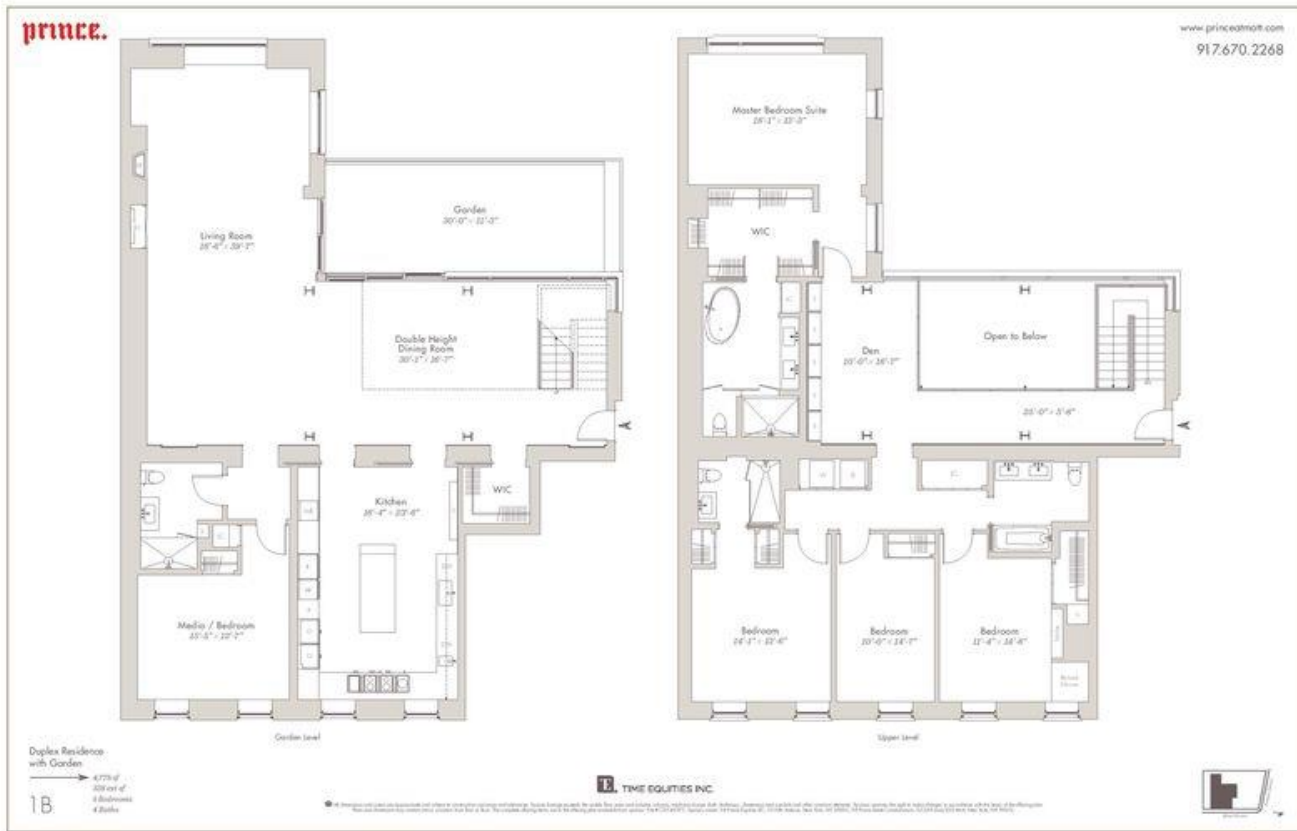
And for the ritzy, \$25 million townhouse, which comes with its own private garden:

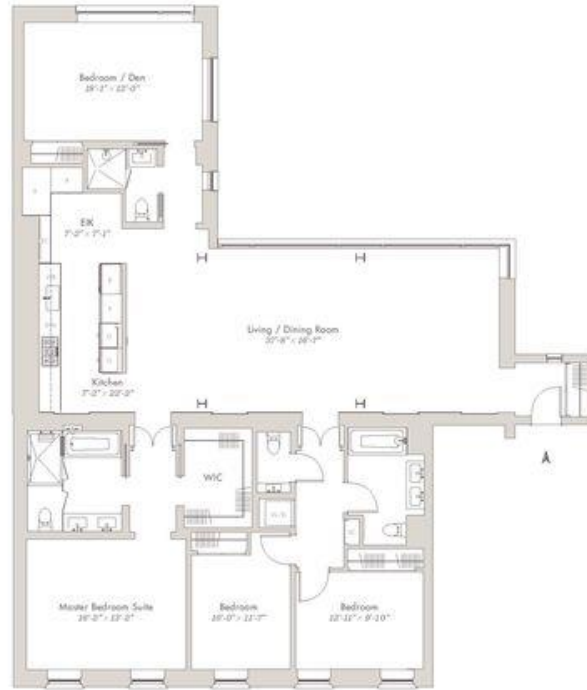


1 of 6



And these floorplans:





Residence
 2,029 sq ft
 4 Bedrooms
 3 Baths
 1 Closets Room

28

TIME EQUITIES INC

• All floor plans are subject to change without notice. Dimensions are approximate and should not be used for construction purposes. All dimensions are given in feet and inches. All areas shown are approximate and do not include common areas, utility rooms, or other areas not shown. All areas shown are approximate and do not include common areas, utility rooms, or other areas not shown.



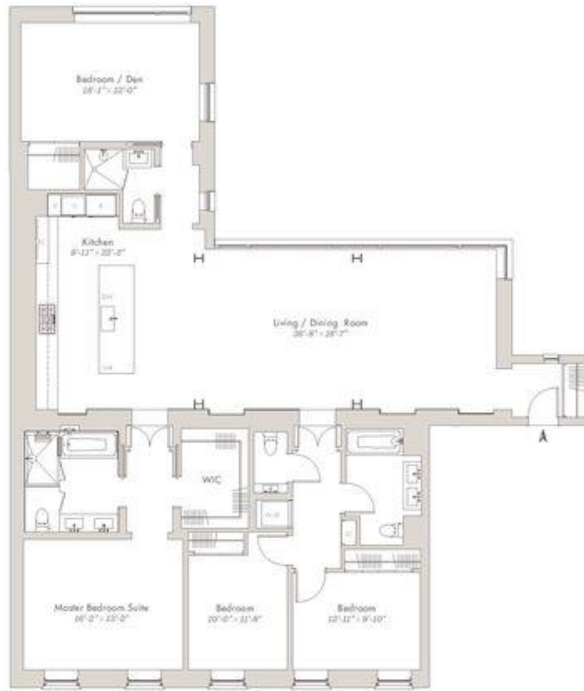
Duplex Residence
 2,742 sq ft
 2 Bedrooms
 2 Baths

3A

TIME EQUITIES INC

• All floor plans are subject to change without notice. Dimensions are approximate and should not be used for construction purposes. All dimensions are given in feet and inches. All areas shown are approximate and do not include common areas, utility rooms, or other areas not shown. All areas shown are approximate and do not include common areas, utility rooms, or other areas not shown.





Residence
 → 3,028 sq. ft.
 3 Bedrooms
 3 Baths
 2 Powder Rooms

3B



• All floor plans are subject to change without notice. All dimensions are approximate and should be used as a guide only. All measurements are taken from the center of the room. All areas are approximate and should be used as a guide only. All areas are approximate and should be used as a guide only.



Duplex Residence
 → 3,727 sq. ft.
 3 Bedrooms
 4 Baths
 2 Powder Rooms

3C



• All floor plans are subject to change without notice. All dimensions are approximate and should be used as a guide only. All measurements are taken from the center of the room. All areas are approximate and should be used as a guide only. All areas are approximate and should be used as a guide only.





Duplex Penthouse
with Three Terraces

- 3,072 sq ft
- 3,072 sq ft
- 2 Bedrooms
- 4 Baths
- Master Suite

PH

THE EQUITIES INC.

© 2014 Prince at Notch is a registered trademark of The Equities Inc. All rights reserved. This plan is not to be used for any other purpose without the written consent of The Equities Inc. All dimensions are approximate and subject to change without notice. All measurements are to the center of the wall unless otherwise noted. All areas are approximate. All areas are subject to change without notice. All areas are approximate. All areas are subject to change without notice.

