

MANSION GLOBAL

January 5, 2021

Ninth-Floor Apartment in a Famed Robert A.M. Stern-Designed Building that Faces Central Park

LISTING OF THE DAY

Location: Upper West Side, Manhattan

Price: \$35 million

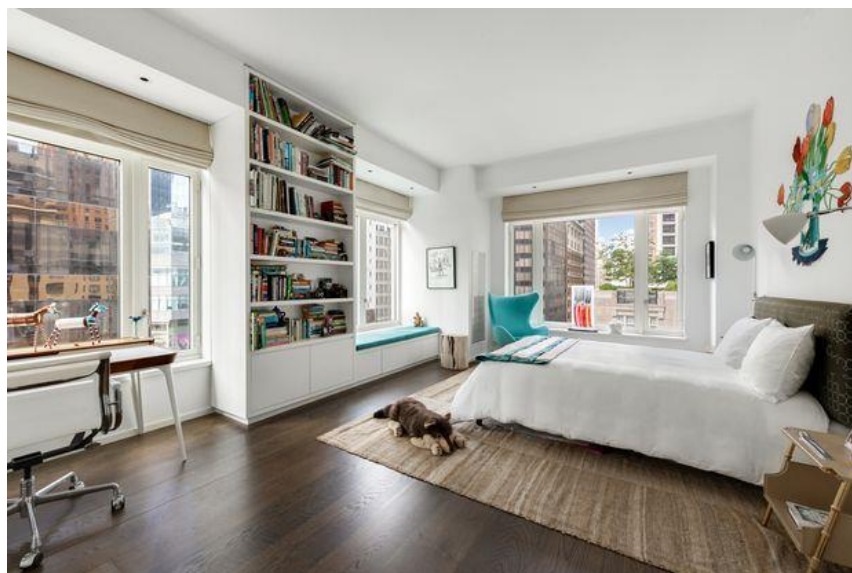
This ninth-floor corner apartment in the prestigious Robert A.M. Stern-designed limestone condo tower at 15 Central Park West faces directly into Central Park.

The owner chose the ninth floor because of the views, listing agent Emily Beare said. “You’re just above the treetops, so you’re still connected to the park, but you can see across the park.”

“The owner completely gutted the apartment when she bought it” in 2008 from the developer, Ms. Beare said. She then worked with architect Jeffrey Beers’s design team to redesign it completely.

They modified the floor plan, making some of the public rooms bigger, she said. “They wanted to bring more of the park into the apartment,” opening up some of the spaces to bring in more light and better views.

“The apartment everywhere is just flooded with light,” Ms. Beare said.



The 4,565-square-foot condominium has four bedrooms, four full bathrooms and one partial bathroom.

EVAN JOSEPH IMAGES

The owner wanted a “modern and open loft-like feel,” and she wanted to be “uptown and near the park,” Ms. Beare said. The redesign took about two years.

Architectural and design details include 11-foot ceilings, dark fumed European oak veneer on all of the doors and millwork, 12-inch wide-plank oak flooring, Moroccan wall tiles, hand-blown glass fixtures, and warm ambient lighting with recessed ceiling fixtures to accentuate the artwork.

The public rooms include a generously proportioned living room, a dining room, a library and the kitchen, which was reconfigured to highlight views of Central Park.

The dining room has custom floor-to-ceiling glass-panel and bronze sliding doors and can be closed off completely from the living room and the kitchen, which is outfitted with a Sub-Zero refrigerator and wine refrigerator, two Miele dishwashers, and a fully vented Thermador six-burner cooktop with dual ovens, a grill and a griddle.

A central gallery offers plenty of room for the owner’s “huge art collection from all over the world—from Africa, Central America, also emerging artists,” Ms. Beare said. “The art is very colorful and modern.”

Overlooking Central Park, the primary bedroom suite features a gel fireplace, two large walk-in closets and a dressing room. The entire bathroom is finished in Italian Silver Travertine, with a deep soaking tub, a separate steam shower, two vanities, radiant-heated floors and cove lighting.

The west side of the home has three more en-suite bedrooms, a home office, a den and a laundry room.

Stats

The 4,565-square-foot condominium has four bedrooms, four full bathrooms and one partial bathroom.

Amenities

Building amenities include 24-hour service staff, a landscaped porte cochère, a garage, a 14,000-square-foot fitness center, a 75-foot sky-lit pool, steam and sauna, private dining, a wine cellar, a library, a business center, a private screening room, meeting space, a game room, an outdoor terrace and a children's playroom.



Architectural and design details include 11-foot ceilings, dark fumed European oak veneer on all of the doors and millwork and 12-inch wide-plank oak flooring.

EVAN JOSEPH IMAGES

Celebrity Cachet

Mansion Global has reported some notable residents at 15 Central Park West, including Denzel Washington, Robert De Niro, fashion designer Elie Tahari, and previously Sting, who sold his penthouse there for \$50 million.

Neighborhood Notes

The building is directly across from Central Park and near Lincoln Center for the Performing Arts, Carnegie Hall, the Time Warner Center and the Museum of Arts and Design.

Agent: Emily Beare, Core

[View the original listing.](#)