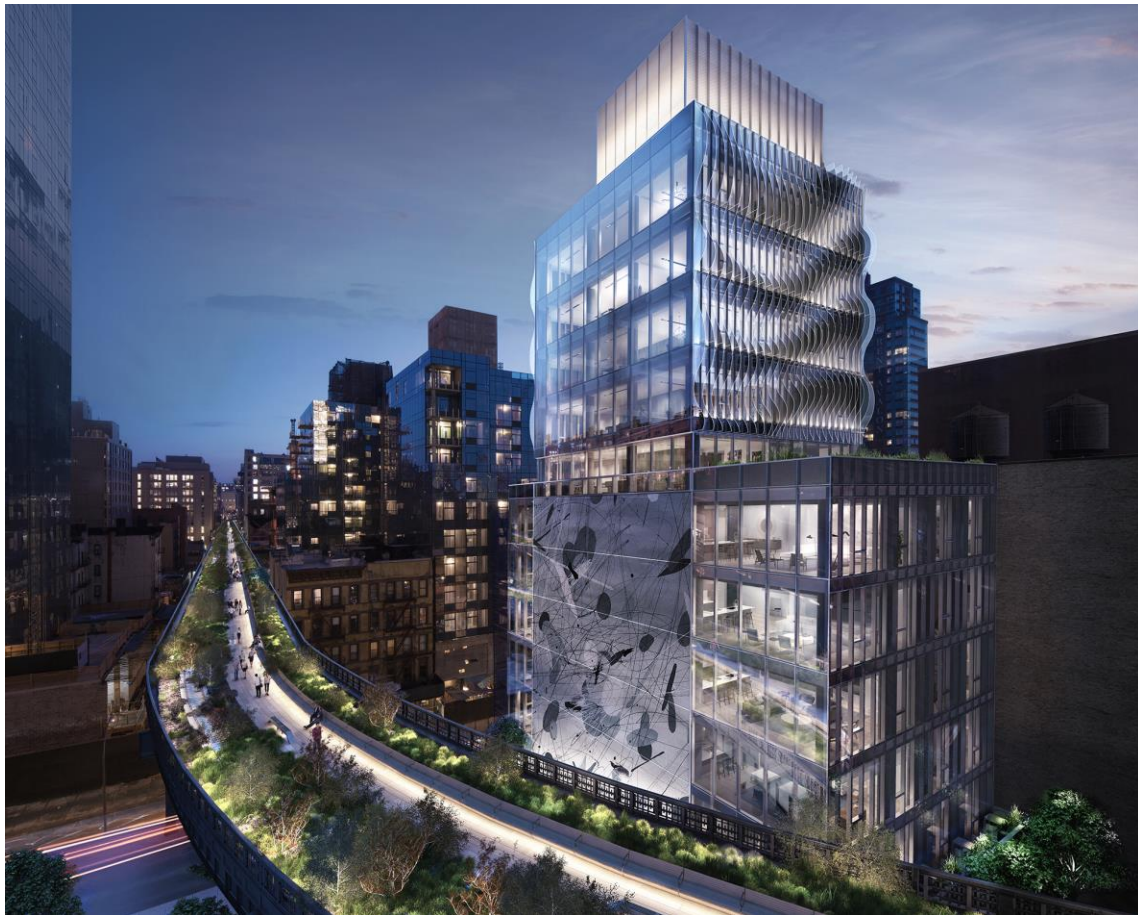


March 23, 2018

Inside Five One Five, Soo K. Chan's Latest NYC Residential Building



Exterior of Five One Five, a new residential building in West Chelsea by SCDA Architects. Rendering courtesy of Neoscape.

West Chelsea, the tony New York City neighborhood surrounding the High Line and a stone's throw away from Hudson Yards, is well-known for its avant-garde architecture—Zaha Hadid, Jean Nouvel, and Frank Gehry have all recently left their mark. Joining the pack is Five One Five, an 11-story condominium designed by Singaporean firm SCDA Architects and developed by Forum Absolute Capital Partners, which features a distinctive rippling facade of curvilinear glass fins.



Living room of model unit. Photography courtesy of CORE.

But this isn't the building's only defining feature. Five One Five sits at the High Line's only 90-degree inflection, framing it on both sides. Each of the 15 units boasts parkside views—the only property in Manhattan with this distinction. Its iconic site at a bustling thoroughfare didn't come at loss of privacy for residents, however. Principal Soo K. Chan, who oversaw all interior and exterior design details, incorporated a double-glazed tinted curtain wall, offering seclusion and transparency in equal measure.



Bedroom of model unit. Photography courtesy of CORE.

Inside, find two- and three-bedroom units, along with a five-bedroom penthouse, with “materials and finishes selected to touch the senses, like pietra gray marble and engineered timber floors” says Chan. State-of-the-art Bulthaup kitchens, Gaggenau appliances, Molteni millwork, and Lutron shading systems lend even more luxury. And just like its surrounding neighborhood, amenities abound. Along with a round-the-clock attended lobby and direct keyed elevator access, each unit comes with private storage spaces and a residents-only rooftop terrace complete with an outdoor kitchen.



Kitchen of model unit. Photography courtesy of CORE.



Bathroom of model unit. Photography courtesy of CORE.



Bedroom of model unit. Photography courtesy of CORE.



Living room of model unit. Photography courtesy of CORE.



Shower of model unit. Photography courtesy of CORE.