

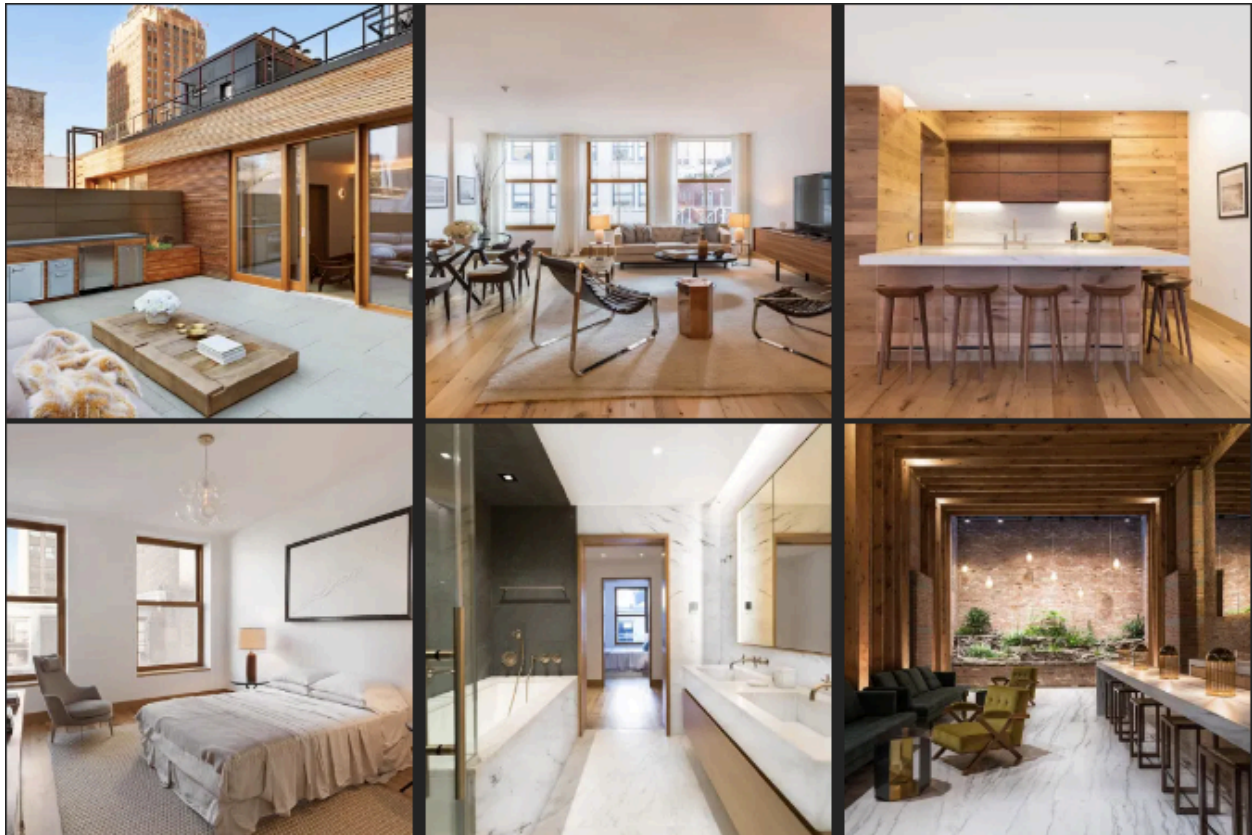


LUX EXPOSÉ

April 9th, 2021

From Hawaii to New Jersey, Most Lavish Penthouses for Sale

60 White Street



Located in the heart of Tribeca on a charming cobblestone street, this 6,207 sqft. duplex penthouse boasts 5 bedrooms and 6.5 bathrooms with unbeatable views and light. In addition to nearly 1,500 square feet of private outdoor space, this state-of-the-art residence features separate air control, perimeter radiant heating, electronic and video intercom systems, as well as an individually-wired security system by American Security, a pre-wired Cloud9 system, and a Lutron home automation system. Amenities within the boutique condominium include an on-site fitness center, storage, private residential lounge and more. The \$13 million penthouse is listed by Emily Beare at CORE.