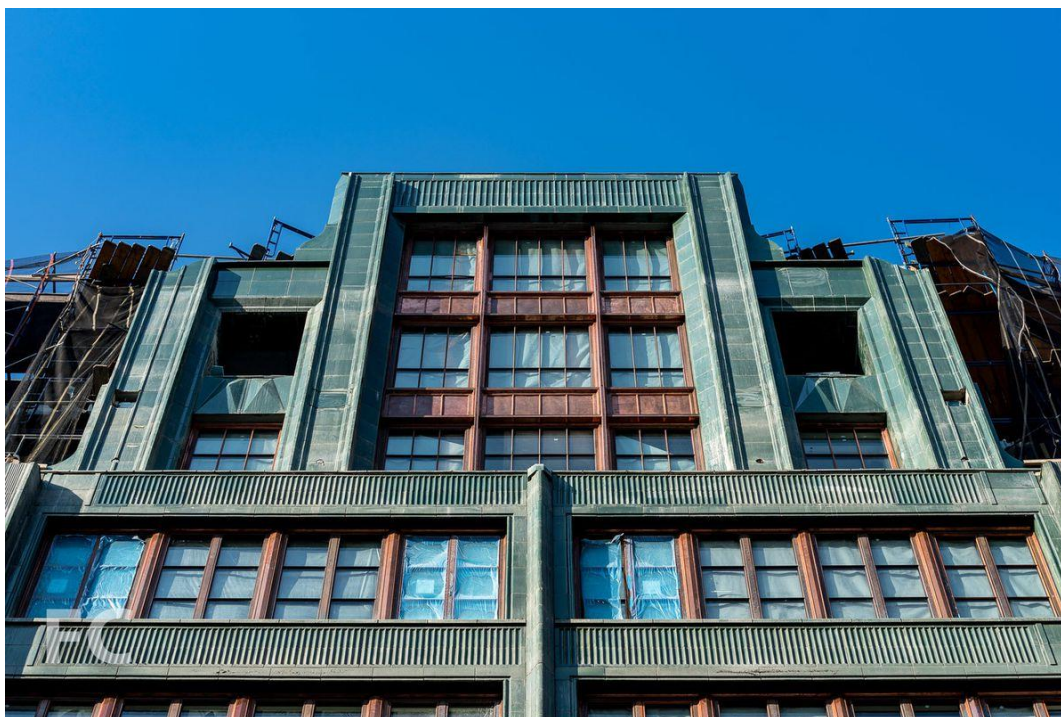




August 10, 2018

Roman and Williams-designed Chelsea condo wraps up facade installation

The ten-story building should be ready to make its debut soon



Photos courtesy Field Condition

It's been a while since we last checked in on JDS and Largo Investments' Art Deco-inspired condo near the High Line, the Fitzroy, located at 514 West 24th Street. Last June, the ten-story condo building topped out and according to Field Condition, who was recently on site and captured a few new photos of the project, facade installation is nearing completion.

Roman and Williams-designed building's facade features green terra-cotta panels and oak windows with copper framing. There was an intricate process in place to get the building's facade to look the way it does and it involved 5,600 terra-cotta blocks in 500 unique types that were made at Boston Valley Terra Cotta in Buffalo, New York, and went through a rigorous process of creation and testing before finally ending up at the construction site.

The blocks were then carved, hand- or spray-painted, baked, and glazed on site. You can read up on the full process [here](#).

There will be just 14 condos ranging in size from two- to five-bedrooms and sales for some of the residences launched back in November 2015, with prices starting around \$5.2 million. The building is expected to debut sometime this year.

