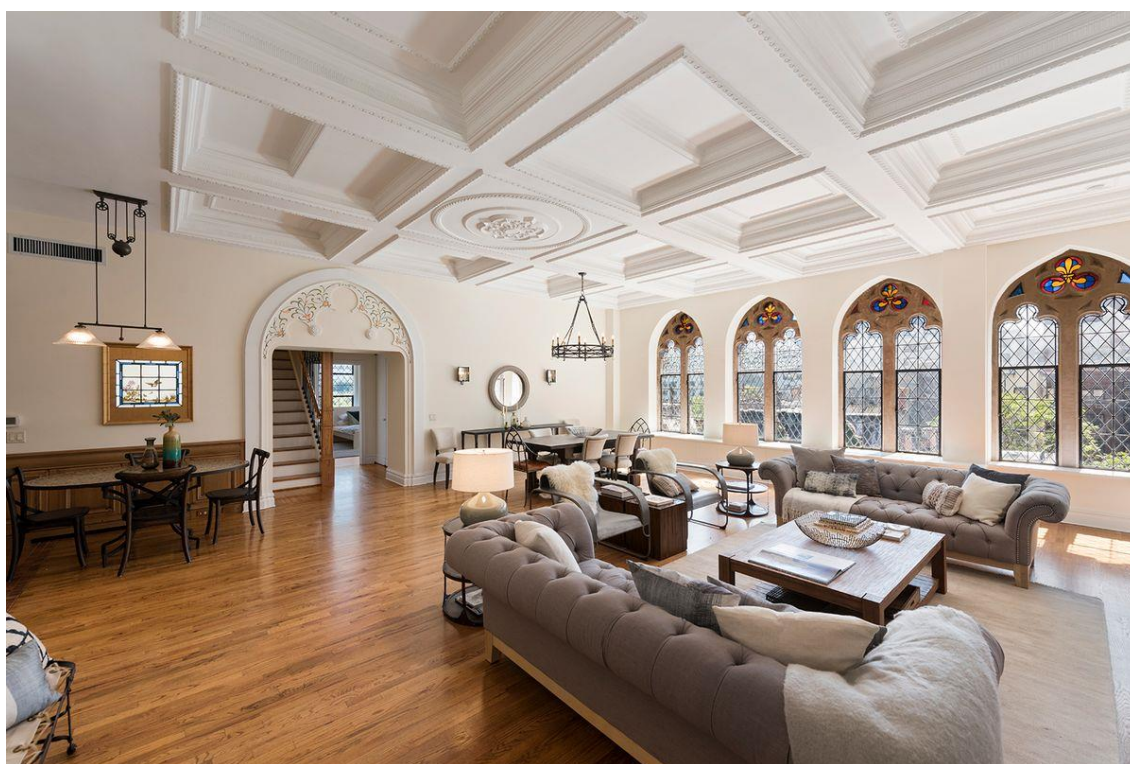




September 19, 2017

Gorgeous Gramercy condo in a converted parish house wants \$5.25M

The condo still retains many of the historic elements of the parish house



Via CORE

Part of a former parish house that was converted into a condo building in 2005, this spacious, five-bedroom apartment boasts tons of modern finishings, but still holds on to a lot of its historic elements as well.

The building this apartment is in, at 205 East 16th Street, was built in 1888, and served as the parish house for St. George's Episcopal Church, which still exists next door. As a result the apartment still contains many of the striking remnants of the parish house.

In the living room, for example, are the nearly 12-foot-tall coffered ceilings and stained glass windows; this style of windows is present throughout the apartment. In the master

bathroom you can still see the original, exposed brownstone columns from the building's parish days.

The bedrooms here have a bit of a quirky setup. One of the five bedrooms is located up a flight of stairs, three bedrooms are located on the main level, and master bedroom is located down a small flight of stairs off the main level.







This master suite comes with its very own solarium, private terrace, and a home office. Aside from that, the apartment comes with four-and-a-half bathrooms, a spacious laundry room, oak hardwood flooring, and a kitchen that features stainless steel appliances, stone countertops, and a farmhouse sink.

For all of that, this condo is asking \$5.25 million.





