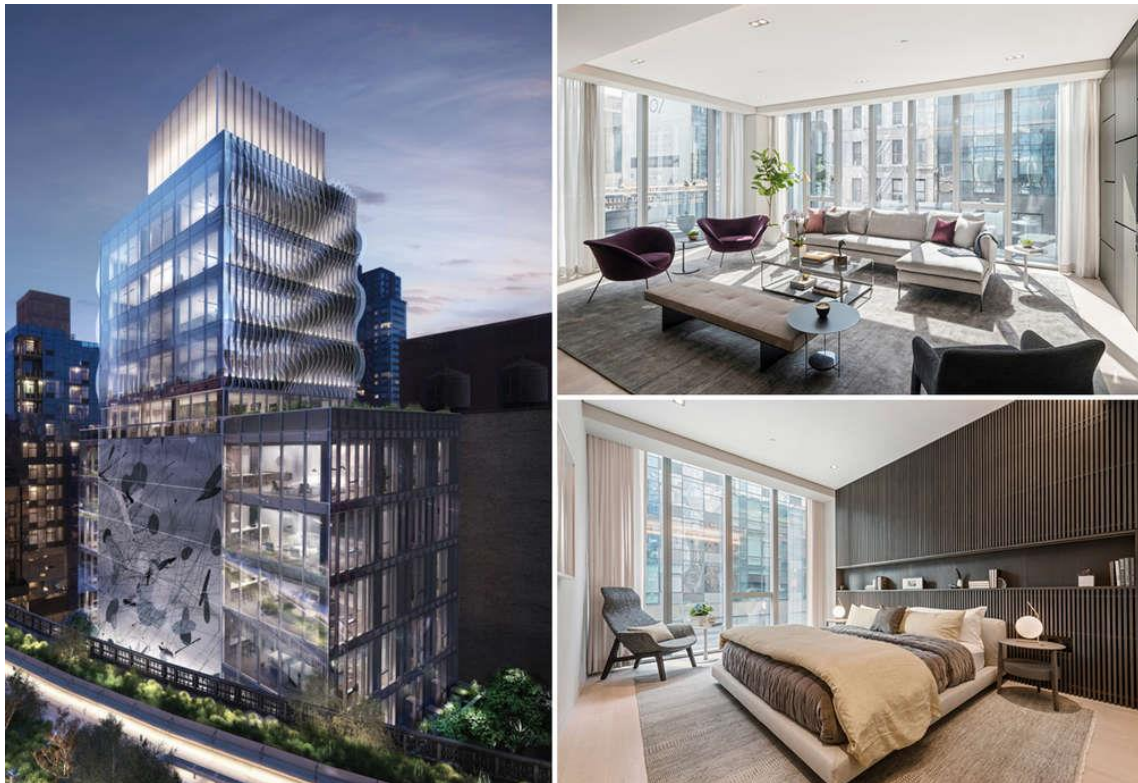


CITYREALTY

March 27, 2018

Five One Five: At the Doorstep of Hudson Yards, Condos Embraced by the High Line Launch Sales



Five One Five (Renderings via CORE and Forum Absolute Capital Partners)

It's been long time coming for the top-to-bottom conversion of a former loft building at 515 West 29th Street. Now as construction comes to a close, the CORE sales team has announced that the building, named **Five One Five**, is now selling its 15 custom-designed residences. The glassy endeavor is shaped by the Soo Chan-led firm, SCDA Architects, and presents a rare opportunity to own a home at the doorstep of Hudson Yards while overlooking the High Line on not one but **TWO** sides.

Homes will come in a mix of two- and three-bedroom layouts and asking prices range from \$4.3 million to \$8.5 million. Yet to be released aeries include a five-unit penthouse collection with wide-angle views of the High Line. Amenities in the building include a 24-hour attended lobby, gym, communal roof deck with kitchen and private storage.

Five One Five

3N - 6N 2,133 SQF 2 Bedroom, 3 Bathroom

35 W 29th St.
 Manhattan, NY 10001
 212.474.4141
 info@fiveonefive.com



Key Features

- Marble Tiled Hallways, Bath
- Program of Kitchen Island, Bar, Seating
- Marble Countertop, Granite Backsplash, Light Fixtures
- Hardwood, Contemporary Minimalist and Lighting
- Stainless-steel and Light-colored Cabinetry
- Marble, Granite, Quartz
- 100% LED Light Fixtures
- Hardwood by Home Interiors, Inc.
- Kitchen Island
- Marble Backsplash
- Granite Appliances
- White Appliances



Residence #3N and #3S

Five One Five
 3S - 6S 2,140 SQF 2 Bedroom, 3 Bathroom

3S - 6S
 2,140 SQF
 2 Bedroom, 3 Bathroom



Key Features

- | | |
|--|--|
| <ul style="list-style-type: none"> • Hardwood Floors in Living Room • Granite or Solid Surface Kitchen Countertop • Stainless Steel Appliances: Dishwasher, Electric Range, Refrigerator, Over-the-Range Microwave, Dishwasher, Electric Range, Refrigerator • In-unit Laundry • Hardwood Floors in Living Room • Granite or Solid Surface Kitchen Countertop • Stainless Steel Appliances: Dishwasher, Electric Range, Refrigerator, Over-the-Range Microwave, Dishwasher, Electric Range, Refrigerator • In-unit Laundry | <ul style="list-style-type: none"> • Hardwood Floors in Living Room • Granite or Solid Surface Kitchen Countertop • Stainless Steel Appliances: Dishwasher, Electric Range, Refrigerator, Over-the-Range Microwave, Dishwasher, Electric Range, Refrigerator • In-unit Laundry • Hardwood Floors in Living Room • Granite or Solid Surface Kitchen Countertop • Stainless Steel Appliances: Dishwasher, Electric Range, Refrigerator, Over-the-Range Microwave, Dishwasher, Electric Range, Refrigerator • In-unit Laundry |
|--|--|



Residence #5S

The first units to go live are a trio of two-bedrooms located on the third and fifth floors. As you'd expect, these sun-bathed perches cost a pretty penny — asking an average of \$2,565 / ft² (the average condo listing price in Manhattan is \$1,741 / ft² to give you some reference).



Living Room (All photos courtesy of CORE Real Estate)

The condos come with all the usual perks: wide-plank light oak floors, ten-foot-high ceilings, and floor-to-ceiling ceilings for you to haughtily look down at High Line passersby. To ensure your home doesn't become an uncomfortable fishbowl, installed are Lutron HomeWorks QS System for shades and lighting, electronics, and temperature control. Additional features include Bulthaup kitchens with a Gaggenau appliance package and built-in multipurpose islands.



Kitchen finishes



Bath

The listed units: #3S and #5S face south and have corner living rooms and windows overlooking the High Line. Their 2,140 square foot layouts position the bedrooms (which have en-suite baths) along the sunny southern exposure. Towards the units' interior, is the

private key-in elevator and foyer, a study and third bathroom off the dining area. The homes are listed for **\$5.75 million for #5S** and **\$5.45 million for #3S**.

Facing north towards the High Line's westward bend is the N line. **Residence #3N** is a 2-bed, 3-bath priced at \$5.25 million. The home is essentially a reflection of the south facing units but with a living area combined with the dining area rather than the kitchen.



Master Bedroom

The West Chelsea building stands apart from other glassy High Line constructs through a unique glass waveform arrayed along the upper floors. The press release announcing the sales launch explains the curvy glass fins grant the façade a rippling appearance, reflective of Soo K. Chan's signature style. Chan explains, "As the only site at the 90-degree inflection of the High Line, we sought to create a certain fluidity and movement at Five One Five." He goes on to say, "The location necessitates a sculptural approach to the treatment of the building. Situated at the gateway to the Hudson Yards, the building is broken down into three stacked, shifting volumes, transitioning between the urban scale of a city skyscraper, to the pedestrian scale of the sidewalk."



(CityRealty)



Five One Five with Hudson Yards behind (CityRealty)

The project was brought to market by New York-based Forum Absolute Capital Partners (FACP) and has been in the works since 2013 when Joseph Beninati's

Antares/Bauhouse Group submitted plans to add five floors and convert the former five-story warehouse. After slow, meticulous work involving the removal of the former building's facades, reinforcing the foundation and adding on several new floors, the project appears as a gleaming brand-new build in one of the city's most active neighborhoods. Brian Vetter, Managing Director at FACP says, "We are pleased to bring this exciting development, which we are confident will be a highly sought-after luxury offering, to the market."