

February 15, 2018

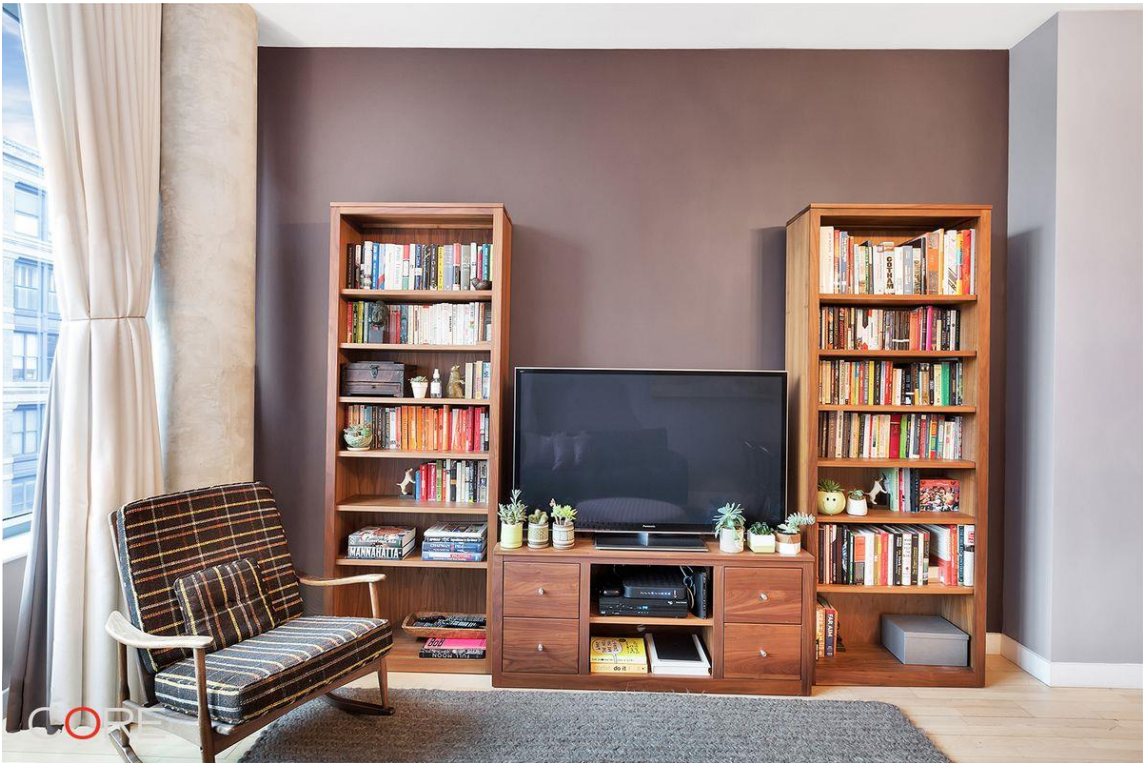
**This two-bedroom Soho condo runs the length of a building near Balthazar**



*It's a floor-through apartment, and it looks like it gets plenty of natural light. CORE*

This two-bedroom, two-bath condo is in a building immediately identifiable by its curved exterior (see photo at bottom). Designed by Richard Gluckman, who was also behind art museums including the Cooper Hewitt and the Philadelphia Museum of Art, the Soho building has the expected amenities for a luxury building of its size, and is close to several transit options. It's also around the corner from the famed French restaurant Balthazar.

Listed by CORE for \$2.5 million, the apartment runs through a whole floor and measures just under 1,200 square feet, with downtown views and high-end fixtures. It also comes with a storage unit in the building.





Upon entering, a hallway leads to the open plan living and dining room, where 10-foot ceilings and large windows help illuminate the space and overlook Kenmare Street. A large, marble island adds some counter space to the smallish kitchen, which is equipped with a Miele stove and dishwasher, and a SubZero fridge.





At the opposite end of the apartment is the master bedroom, which has two large closets and leads to a roomy en-suite bath with double sinks, storage space, and a separate shower and bathtub.

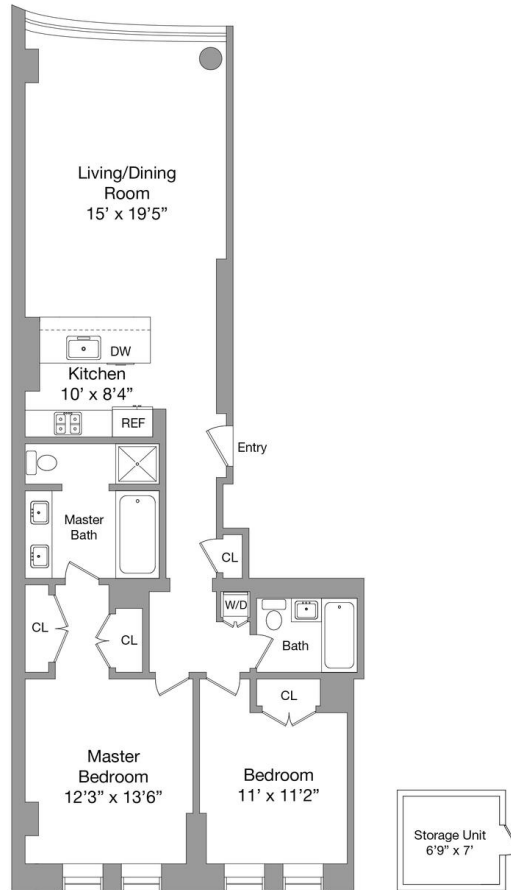




The adjacent second bedroom, configured here as a den, is almost as large as the master, and has its own full bathroom.



210 LAFAYETTE ST  
APT 5A



	HEADQUARTERS	104 Fifth Ave - 17th Floor - New York, NY 10011 - 212-612-9609	VISIT	CORENYC.COM				
<small>CORE Group Marketing LLC has not measured the subject Property and makes no representations as to the accuracy of any of the measurements provided. The measurements are estimates and should not be relied upon. If exact measurements are a concern, the property should be independently measured by a professional. All information regarding a property for sale, rental or financing is from sources deemed reliable. No representation is made to the accuracy thereof, and such information is subject to errors, omissions, change of price, rental, commission or other conditions, prior sale, lease or financing, or withdrawal without notice.</small>								

The building's exterior certainly makes it stand out from its neighbors. Whether that makes it an eyesore or eye-catching is a matter of personal taste. The condo has a washer and dryer, and the building has doorman and concierge service, a live-in super, and a gym.

The building is three long blocks from the N, Q, R, W, 6, J, and Z trains at Canal Street.