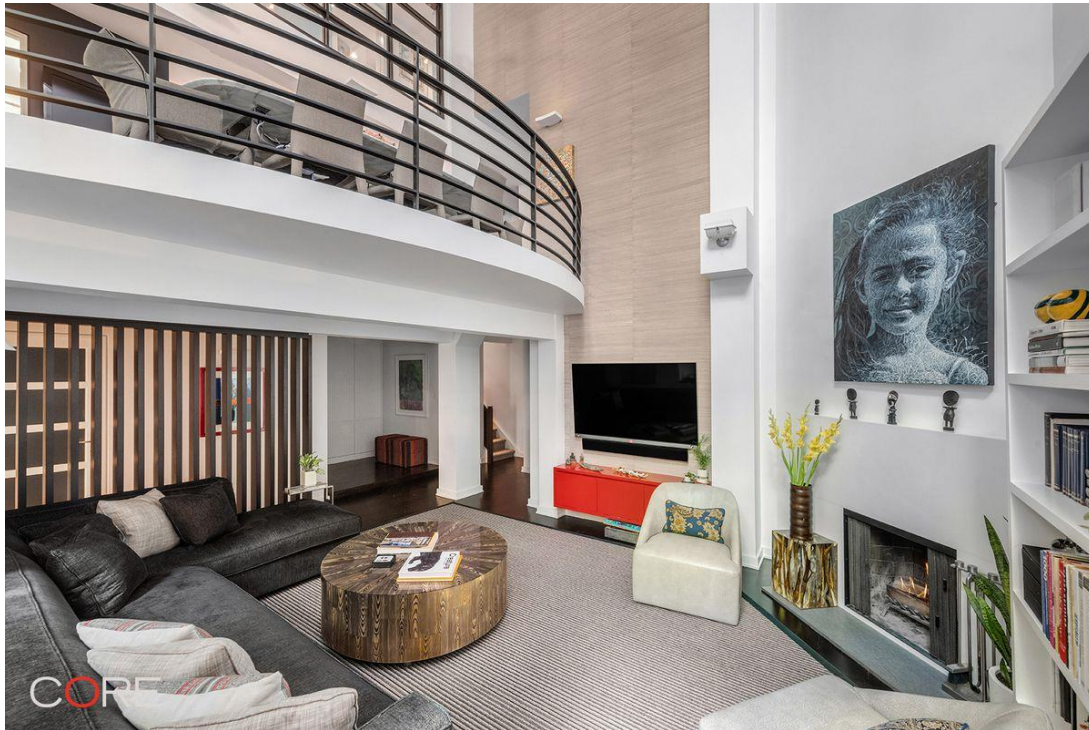




August 20, 2018

\$3.4M West Village triplex has three outdoor spaces and a glass atrium



In the converted brick West Village loft building formerly home to the Pickwick Paper Company, and now to 22 condos, this apartment at 35 Bethune Street offers an amenity-rich triplex with original details. The modern three-bedroom apartment is defined by a 24-foot, tiered glass atrium in its center and has more than 2,100 square feet of space. It's currently asking \$3.4 million.



The unit's first level contains the living room with a wood-burning fireplace, a bar, a patio – the first of three private outdoor spaces – an office, and a bedroom containing the high-end washer and dryer.





There's a second-story kitchen open to the dining room, which looks down to the living area below.





The third level contains the floor-through master suite, which has two closets, one a walk-in, a private hallway overlooking the two lower floors, and an en-suite bath with dual vanity, tub, separate stand-up shower and heated floors.



There are built-in shelves, speakers, maple floors, and central air throughout. The listing mentions a private service entrance, but it is unclear where this is.



The six-story building has an elevator and counts Philip Seymour Hoffman among its resident alumni. It's just a seven-minute walk to the 14th Street A, C and E station.