



April 5, 2019

\$1.25M Williamsburg triplex comes with two terraces and dramatic curved glass walls



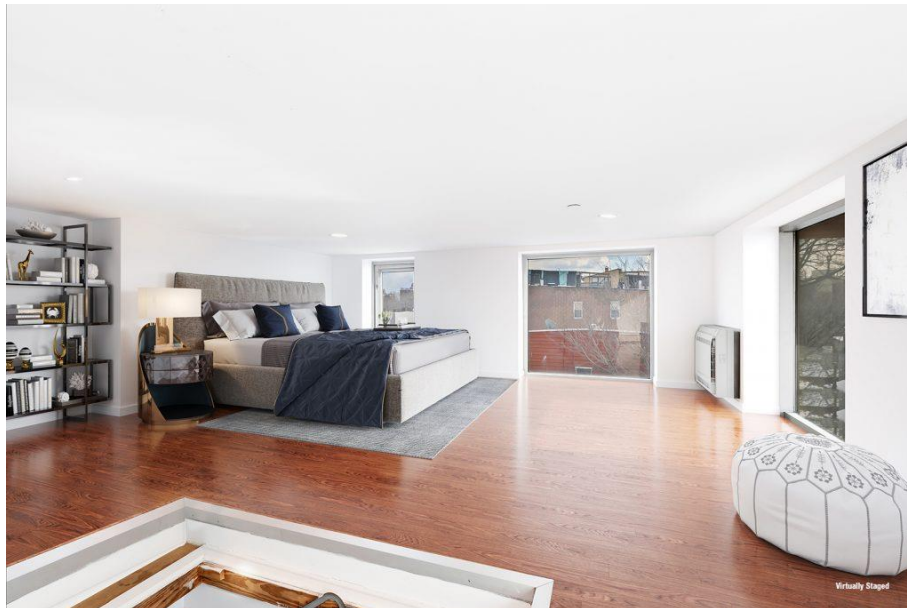
A curved wall of floor-to-ceiling windows is the centerpiece of this two-bedroom triplex at 117 Kingsland Avenue. The 1,127-square-foot Williamsburg pad offers some cool custom built-ins, two terraces, and a convertible mezzanine level. Located in a boutique condo built in 2007, the apartment is equidistant from both the L and G trains and within walking distance of McCarren and McGolrick Parks. Last sold in 2017 for \$995,000, the unit just hit the market seeking \$1,250,000.



The double-height living room features 15-foot ceilings and gets a ton of light from a curved wall of floor-to-ceiling windows, facing west and north. A custom tile platform provides an elevated sitting area and there's enough room for a dining table as well.



Adjacent is a separate kitchen with wood cabinetry, granite countertops, and stainless steel appliances. Sliding doors provide access to an east-facing terrace.



Pull-down stairs provide access to a 300-square-foot mezzanine level. The listing shows this room virtually staged as a third bedroom but it's worth noting that the room currently only has five-foot height clearance.





The arched staircase leads to the upper level where you'll find two large bedrooms and a master bath. The curved glass wall picks up in the master bedroom, while the second bedroom gets access to a second terrace.

The apartment comes with a washer and dryer, and a split system AC that covers all the floors. It also has a 15 year 421 tax abatement, which expires in 2025. The building has a common roof deck and offers additional storage in the basement.