



June 26, 2017

Stylish Chelsea duplex with expansive private terrace asks \$1.6M

The terrace is as big as the living room



Photos courtesy CORE.

When it comes to real estate in Manhattan, everyone knows that a seven figure price tag doesn't necessarily guarantee you anything special so if you're going to spend \$1.6 million on an apartment, let it be something with some pizzazz, like this unique duplex in Chelsea.

The co-op is configured as a one-bedroom, two-bedroom but the beauty of its floorplan is that with some maneuvering, it can be converted into a two-bedroom apartment. New hardwood floors and custom built-ins are the result of a full renovation that modernized the space but also left a hint of classic design in place.

On the lower level you'll find the sun-filled living room centered by a set of stairs that lead to the second level. The open floorplan allows for a light and airy feel and a spacious dining room leads into the quirky but lovely kitchen. There is an abundance of sleek white cabinets in the kitchen, along with stainless steel appliances and an unexpected salmon colored accent wall with a wood-burning fireplace at its base.



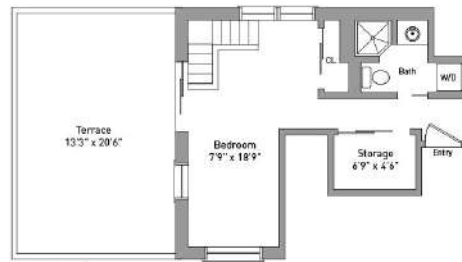
The upper level is home to the apartment's massive en-suite bedroom with heated floors, a washer/dryer machine, a large storage room, and a smaller closet space. An impressive outdoor terrace that matches the size of the apartment's living room is accessed through the upper level and if that wasn't enough private outdoor space, there is a balcony on the first level, just off the dining room.



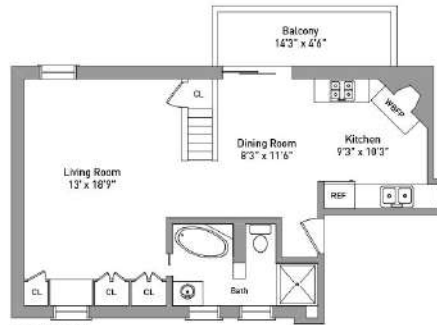


CORE


368 West 23rd Street
Apartment 5R



Upper Level



Lower Level

 CORE Group Marketing, LLC has not measured the subject Property and makes no representations as to the accuracy of any of the measurements provided. The measurements are estimates and should not be relied upon. If exact measurements are a concern, the property should be independently measured by a professional.